

# Effective SAFETY Solutions

## WHERE

Company: **Alcoa**

Location: **SAN CIPRIAN**

Business: **AWA Atlantic**

Contact person: **M. A. Gayol; F. Nores**

## THE ISSUE

The situation of the valve used to make the employee to adopt forced positions in a reduced working place.

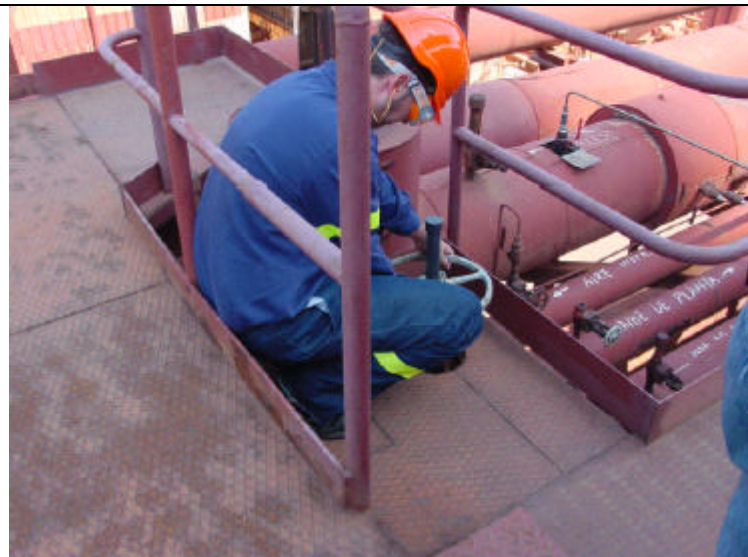
## THE SOLUTION (additional level of protection put in place)

Type: (Technical ☒ - Procedures ☐ - Others ☐ )

Description of key feature or change versus current conditions:

It was constructed a device with a steering wheel shape that is adapted to the air root valve raising the working level to 120cm. Actually the workers can open/ close the valves in a normal body position.

## PICTURES (if applicable) or ADDITIONAL INFO



In the initial situation the employee had to adopt forced positions.



With the new device the employee the job in a normal body position.

## SAFETY BENEFITS – pros/cons

- It eliminates repeated forward sideways bending movement or twisting.

**IMPLEMENTATION COST 300 euros**