

# Effective SAFETY Solutions

## WHERE

Company: **Alcoa**

Location: **SAN CIPRIAN**

Business: **Primary**

Contact person: A. Gomez - **D. Pernas**

## THE ISSUE

The pot change operation exposes the operators of the pot line to a fall hazard for several days. In the past the countermeasure was to put signs and barriers that could not protect people effectively and can interfere with the daily activity around the adjacent pots.

## THE SOLUTION (additional level of protection put in place)

Type: (Technical ☒ - Procedures ☐ - Others ☐ )

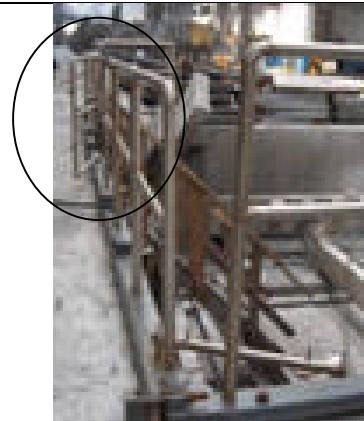
Description of key feature or change versus current conditions:

The chosen and implemented solution was a . The handrail is pre-assembled and installed using the crane before removing the old pot, so it starts to provide solid protection for the operators that run the adjacent pots even before the hazard exists. When the new pot is in, the hand rail is removed.

## PICTURES (if applicable) or ADDITIONAL INFO



Pot Line – The handrail in place will protect the stage till the new pot setting.



Pot Line – The handrail has access stair is installed and has a door to provide pot hole access using a portable stair.

## SAFETY BENEFITS – pros/cons

- The fall risk during pot change was eliminated.
- Floor isolation (electrical safety) is not compromised because no holes are needed.

**IMPLEMENTATION COST OF 5.000 €**